

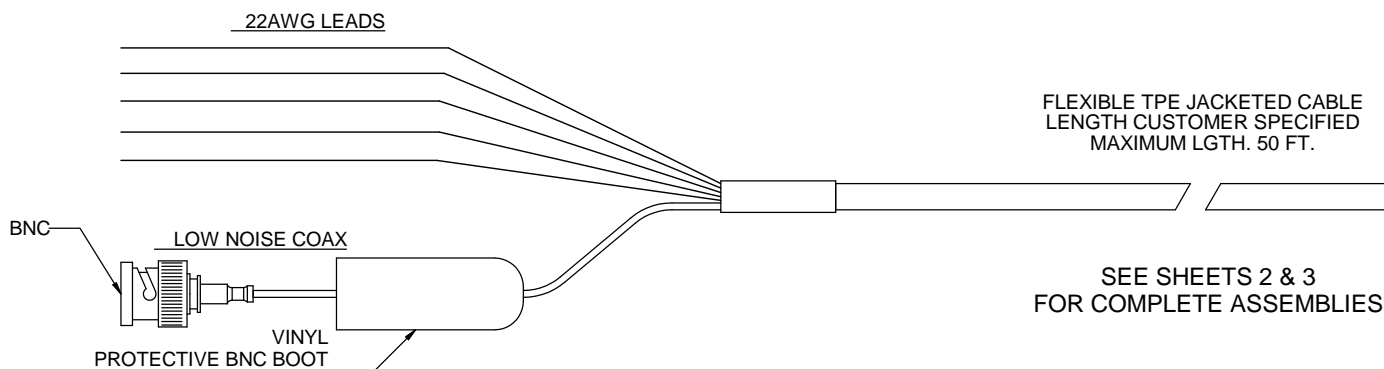
AVAILABLE OPTIONS INCLUDE: HEMI & FLAT ELECTRODES  
NOTCHED, RECESSED, OR FLUSH TIP CONFIGURATIONS

INSERTION / RETRACTION PRESSURE RECOMMENDED 65PSIG -  
ABSOLUTE MAX 100PSIG  
MAXIMUM OPERATING PRESSURE & TEMPERATURE RATINGS  
(SEE CHART 2C0002)  
(FOR HIGH PRESSURE CONFIGURATION SEE DRAWING 2P0044)

KYNAR AND PEEK BODY  
Max 150PSIG (1035kPa) at 158DEG F (70DEG C)  
40PSIG (276kPa) at Max 266DEG F (130DEG C)

CPVC AND POLYPROYLENE BODY  
Max 100PSIG (690kPa) at 167DEG F (75DEG C)  
35PSIG (242kPa) at Max 212DEG F (100Deg C)

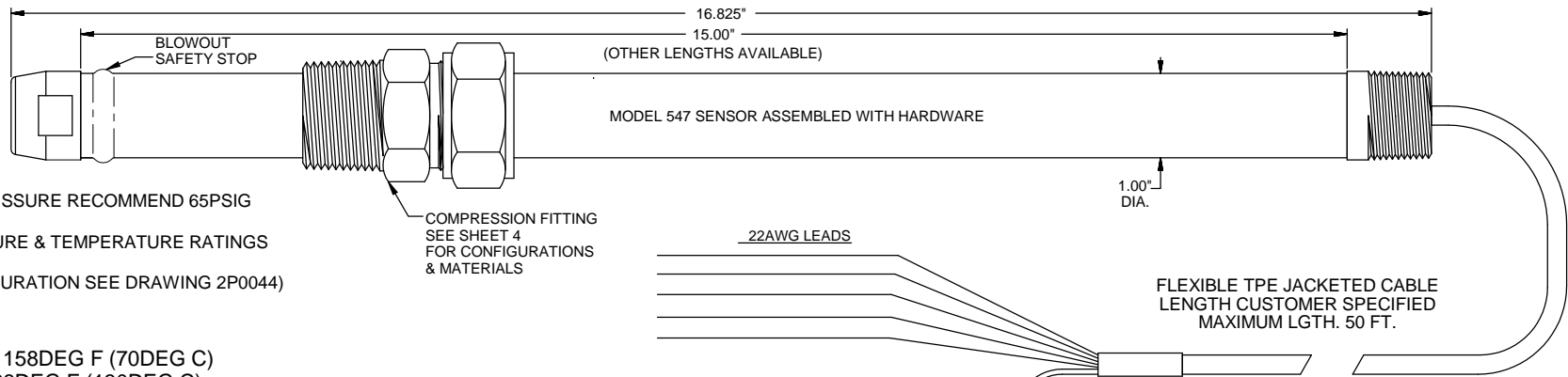
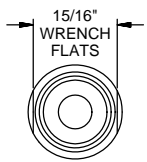
WIRING TERMINATIONS SHOWN ARE FOR EXAMPLE ONLY  
MANY WIRING CONFIGURATIONS ARE AVAILABLE  
SEE DRAWING P0033



SEE SHEETS 2 & 3  
FOR COMPLETE ASSEMBLIES

REV	DATE	REVISIONS	WC	HWM
G	10/17/13	REVISE NOTES AND TEXT		
			DWN	APVD

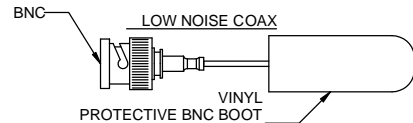
DIMENSIONS IN INCHES		<b>MODEL 547 pH/ORP SENSOR CARTRIDGE OUTLINE</b>		
TOLERANCES				
.0 ± .015"	PART NO.			
.00 ± .010"	SEE DETAILS			
.000 ± .005"				
FRACTIONAL ALL ± .015"	Analyzer Technology, LLC O'BRIEN 5200 Convair Drive Carson City, NV 89706 PH(775)883-2500 FAX (775)297-4740			
ANGLES ± 1/4°	DRAWN BY	W. COWAN	ECO	DRAWING NO
UNLESS OTHERWISE SPECIFIED	APVD BY	HWM	1856	2P0004
	DATE	06/27/2000	SCALE	1:1
			SIZE	SHEET 1 OF 4



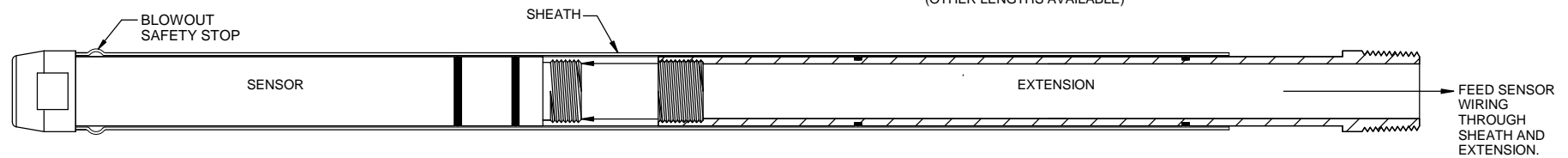
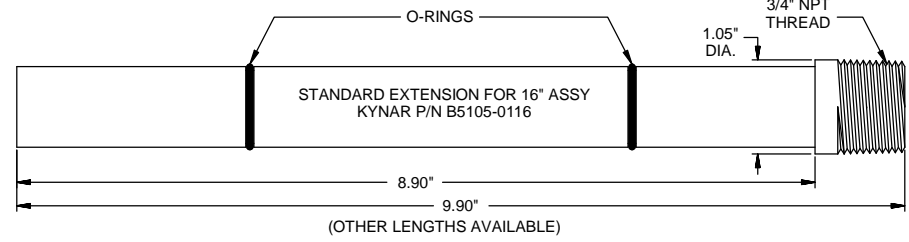
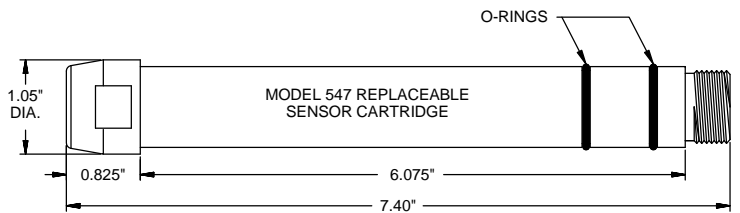
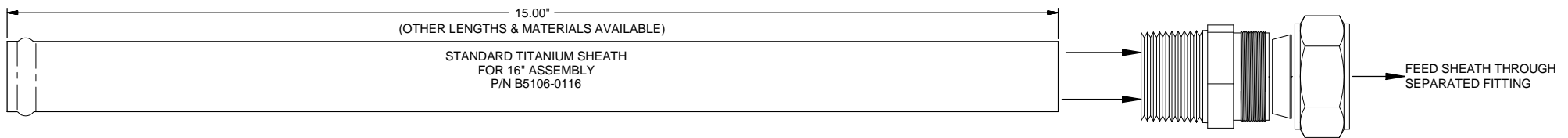
INSERTION / RETRACTION PRESSURE RECOMMEND 65PSIG  
 - ABSOLUTE MAX 100PSIG.  
 MAXIMUM OPERATING PRESSURE & TEMPERATURE RATINGS  
 (SEE CHART 2C0002)  
 (FOR HIGH PRESSURE CONFIGURATION SEE DRAWING 2P0044)

**KYNAR AND PEEK BODY**  
 Max 150PSIG (1035kPa) at 158DEG F (70DEG C)  
 40PSIG (276kPa) at Max 266DEG F (130DEG C)

**CPVC AND POLYPROYLENE BODY**  
 Max 100PSIG (690kPa) at 167DEG F (75DEG C)  
 35PSIG (242kPa) at Max 212DEG F (100Deg C)

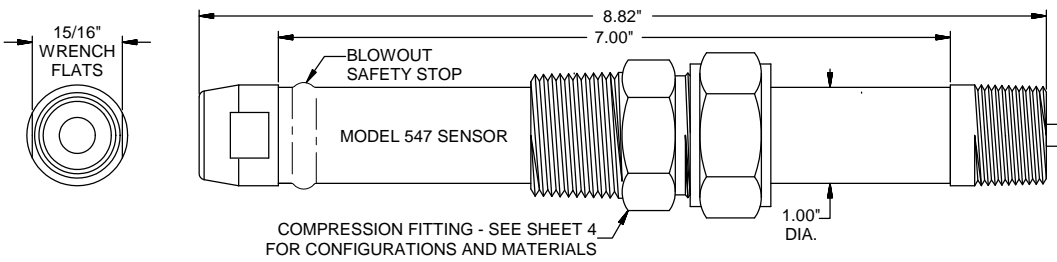


WIRING TERMINATIONS SHOWN ARE FOR EXAMPLE ONLY  
 MANY WIRING CONFIGURATIONS ARE AVAILABLE  
 SEE DRAWING P0033

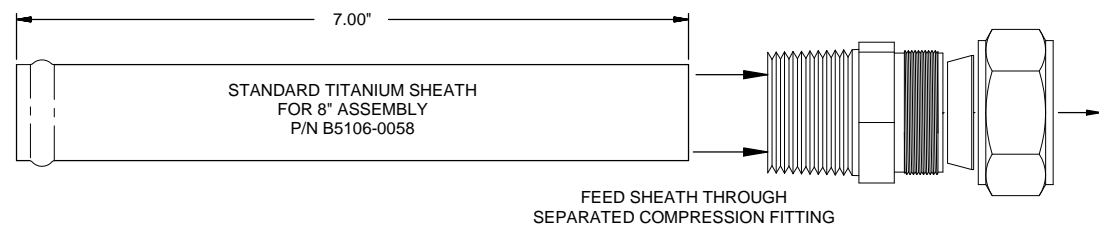


G	10/17/13	REVISE NOTES AND TEXT	WC	HWM
REV	DATE	DESCRIPTION	DWN	APVD
REVISIONS				

DIMENSIONS IN INCHES	<b>MODEL 547 16" pH/ORP SENSOR ASSEMBLY OUTLINE</b>			
TOLERANCES	SEE DETAILS			
.0 ± .015"	<b>BARBEN AMETEK</b> Analyzer Technology, LLC O'BRIEN 5200 Convair Drive Carson City, NV 89706 PH(775)883-2500 FAX (775)297-4740			
.00 ± .010"				
.000 ± .005"				
FRACTIONAL ALL ± .015"	DRAWN BY	W. COWAN	ECO	DRAWING NO
ANGLES ± 1/4°	APVD BY	HWM	1856	2P0004
UNLESS OTHERWISE SPECIFIED	DATE	06/27/2000	SCALE	1:1
			SIZE	SHEET 2 OF 4



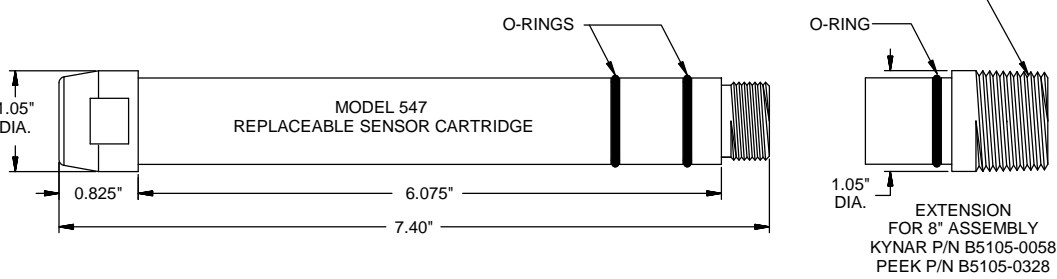
FLEXIBLE TPE JACKETED CABLE  
 LENGTH CUSTOMER SPECIFIED  
 MAXIMUM LGTH. 50 FT.



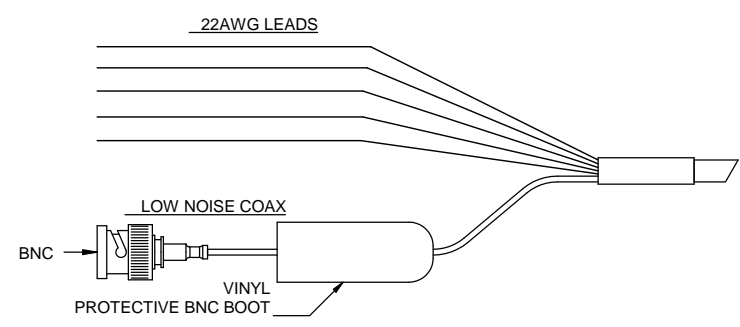
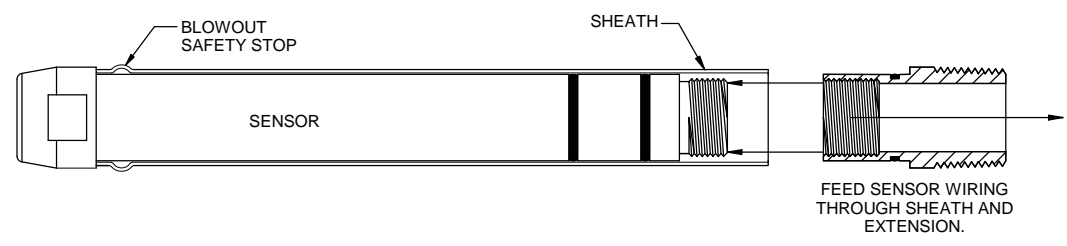
INSERTION / RETRACTION PRESSURE RECOMMENDED 65PSIG  
 - ABSOLUTE MAX 100PSIG  
 MAXIMUM OPERATING PRESSURE & TEMPERATURE RATINGS  
 (SEE CHART 2C0002)  
 (FOR HIGH PRESSURE CONFIGURATION SEE DRAWING 2P0044)

KYNAR AND PEEK BODY  
 Max 150PSIG (1035kPa) at 158DEG F (70DEG C)  
 40PSIG (276kPa) at Max 266DEG F (130DEG C)

CPVC AND POLYPROYLENE BODY  
 Max 100PSIG (690kPa) at 167DEG F (75DEG C)  
 35PSIG (242kPa) at Max 212DEG F (100deg C)



WIRING TERMINATIONS SHOWN ARE FOR EXAMPLE ONLY  
 MANY WIRING CONFIGURATIONS ARE AVAILABLE  
 SEE DRAWING P0033

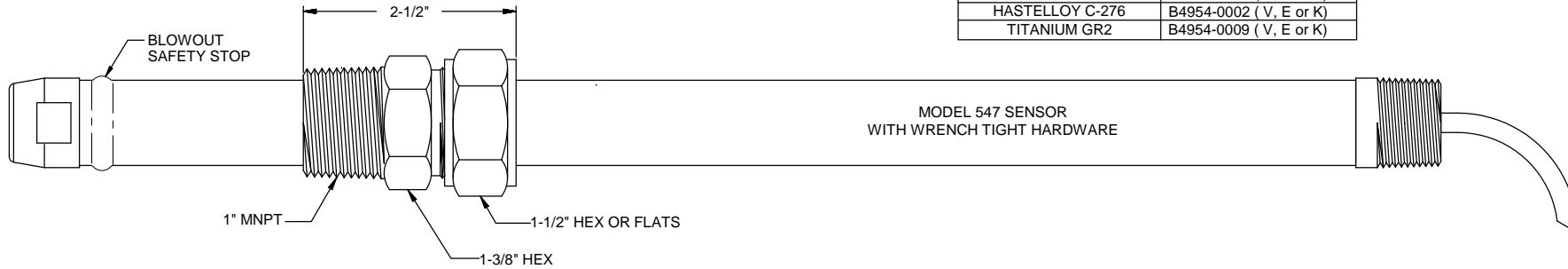


G	10/17/13	REVISE NOTES AND TEXT	WC	HWM
REV	DATE	DESCRIPTION	DWN	APVD
REVISIONS				

<b>MODEL 547 8" pH/ORP SENSOR ASSEMBLY OUTLINE</b>				
DIMENSIONS IN INCHES		PART NO.		
TOLERANCES		SEE DETAILS		
.0 ± .015"		<b>BARBEN AMETEK</b> Analyzer Technology, LLC O'BRIEN 5200 Convair Drive Carson City, NV 89706 PH(775)883-2500 FAX (775)297-4740		
.00 ± .010"				
.000 ± .005"				
FRACTIONAL ALL ± .015"		DRAWN BY	W. COWAN	ECO
ANGLES ± 1/4°		APVD BY	HWM	1856
UNLESS OTHERWISE SPECIFIED		DATE	06/27/2000	SCALE
		SIZE	1:1	DRAWING NO
		SHEET	2P0004	3 OF 4

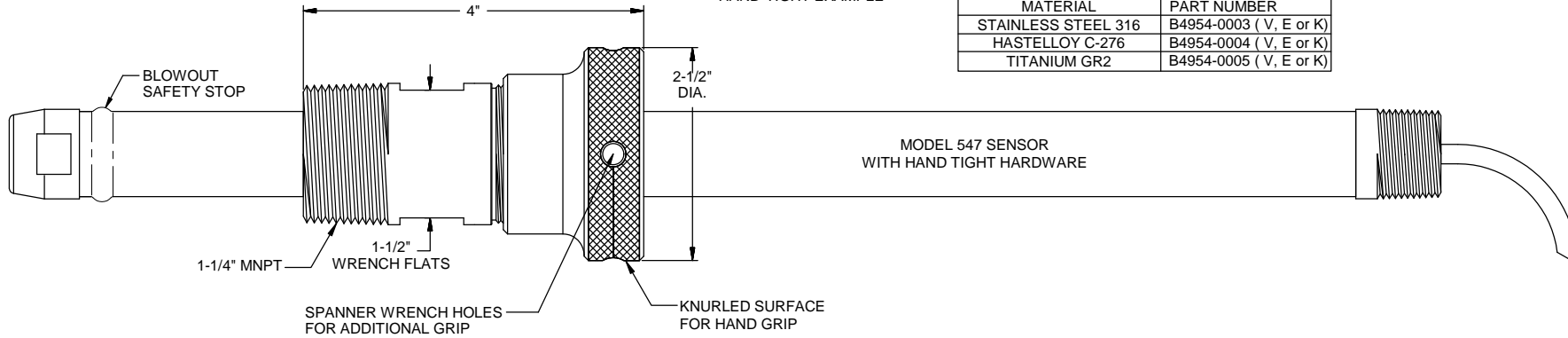
INSERTION / RETRACTION PRESSURE RECOMMENDED 65PSIG - ABSOLUTE MAX 100PSIG

WRENCH-TIGHT EXAMPLE



WRENCH-TIGHT FITTINGS	
MATERIAL	PART NUMBER
STAINLESS STEEL 316	B4954-0001 ( V, E or K)
HASTELLOY C-276	B4954-0002 ( V, E or K)
TITANIUM GR2	B4954-0009 ( V, E or K)

HAND-TIGHT EXAMPLE



HAND-TIGHT FITTINGS	
MATERIAL	PART NUMBER
STAINLESS STEEL 316	B4954-0003 ( V, E or K)
HASTELLOY C-276	B4954-0004 ( V, E or K)
TITANIUM GR2	B4954-0005 ( V, E or K)

G	10/17/13	REVISE NOTES AND TEXT	WC	HWM
REV	DATE	DESCRIPTION	DWN	APVD
REVISIONS				

DIMENSIONS  
IN INCHES  
TOLERANCES

.0 ± .015"  
.00 ± .010"  
.000 ± .005"

FRACTIONAL  
ALL ± .015"

ANGLES ± 1/4°

UNLESS  
OTHERWISE  
SPECIFIED

**OPTIONAL FITTINGS  
FOR 547 SENSOR ASSEMBLY**

PART NO. SEE DETAILS			
<b>BARBEN AMETEK</b>			
Analyzer Technology, LLC O'BRIEN			
5200 Convair Drive Carson City, NV 89706 PH:(775)883-2500 FAX (775)297-4740			
DRAWN BY W. COWAN	ECO	DRAWING NO	
APVD BY HWM	1856	2P0004	
DATE 06/27/2000	SCALE 1:1	SIZE	SHEET 4 OF 4