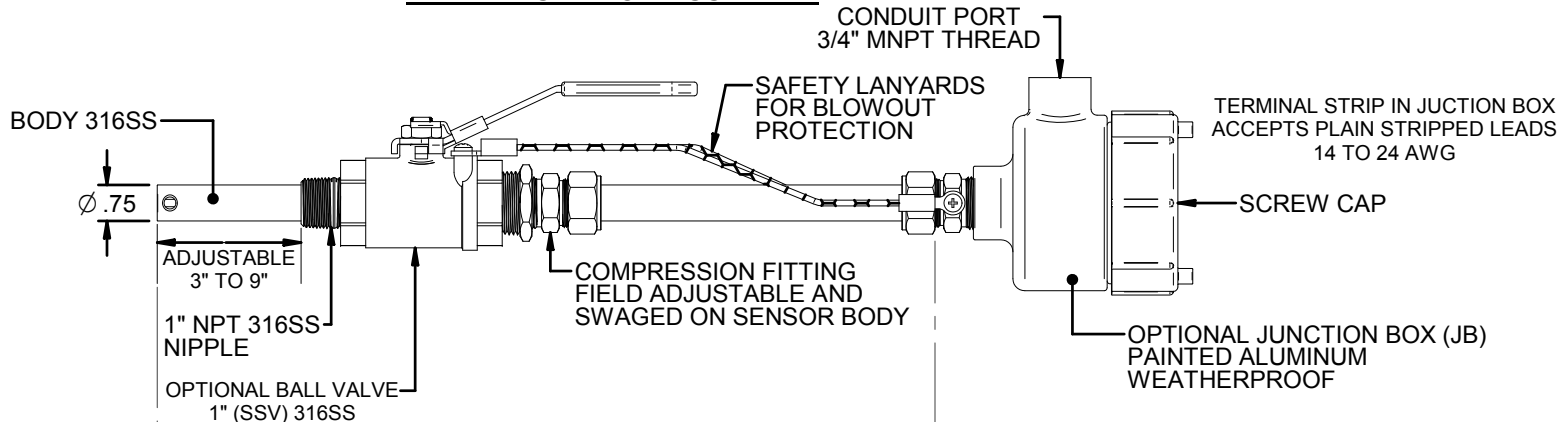


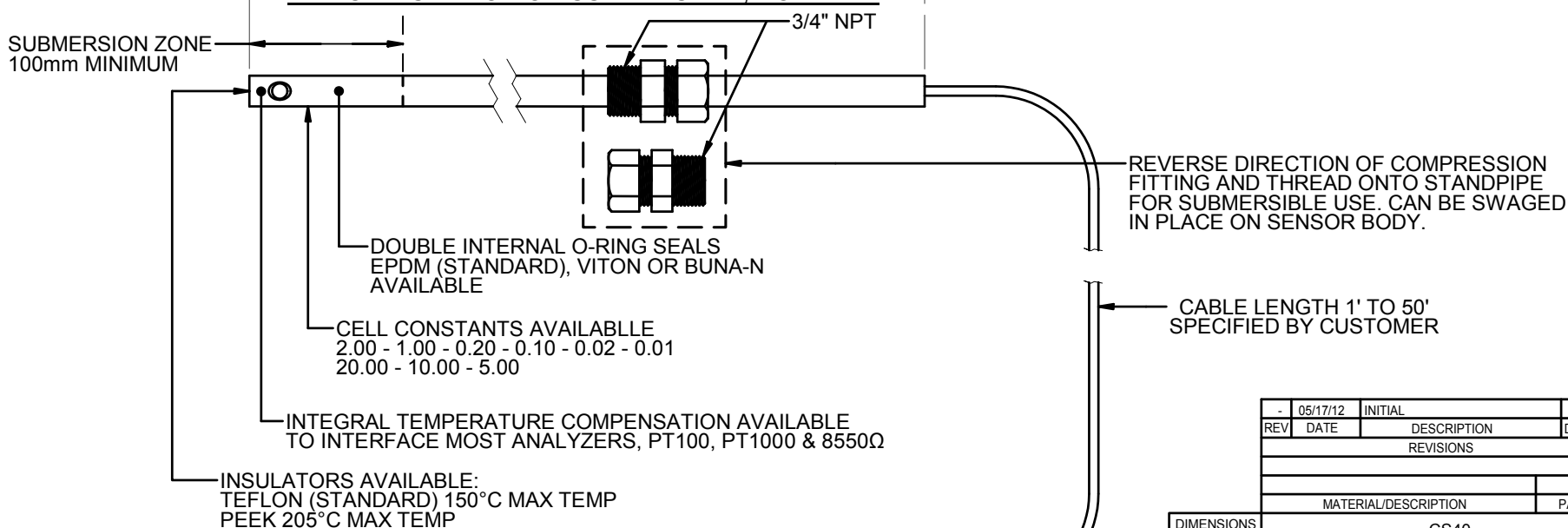
MAXIMUM PRESSURE / TEMPERATURE RATINGS

WITH (SSV) BALL VALVE 50PSIG INSERTION / RETRACTION AT RELATED MAX TEMPERATURE
 DIRECT INSERTION (NO VALVE)
 STANDARD SENSOR (TEFLON INSULATOR) 100PSIG AT 150°C
 HIGH TEMP SENSOR (PEEK INSULATOR) 250PSIG AT 205°C
 ABSOLUTE MAX PRESSURE, STANDARD OR HIGH TEMPERATURE - 500PSIG AT 100°C

VALVE INSERTION ASSEMBLY



DIRECT INSERTION OR SUBMERSIBLE, NO VALVE



TINNED OR #6 SPADE
TERMINATION AVAILABLE
WITH CABLE

BLACK (INNER EL)
WHITE (OUTER EL)
RED (TC)
GREEN (TC)

RATINGS MODEL LABELS
 BAT, LLC
 TEL 800-993-9309

-	05/17/12	INITIAL	WC	HWM
REV	DATE	DESCRIPTION	DWN	APVD
REVISIONS				
MATERIAL/DESCRIPTION			PART NO.	
CS40				
2 ELECTRODE CONDUCTIVITY SENSOR				
PART NO.		FOR		
CS40		CONDUCTIVITY SENSOR		
5200 Convoir Drive Carson City, NV 89706 PH(775)883-2500 FAX (775)297-4740 Analyzer Technology, LLC O'BRIEN				
DRAWN BY		ECO		DRAWING NO
W. COWAN		1310		2P0252
APVD BY		HWM		SCALE
DATE		SCALE		SIZE
05/17/2012		1:1		A
OTHERWISE SPECIFIED		SHEET		SHEET
		1 OF 1		1 OF 1