

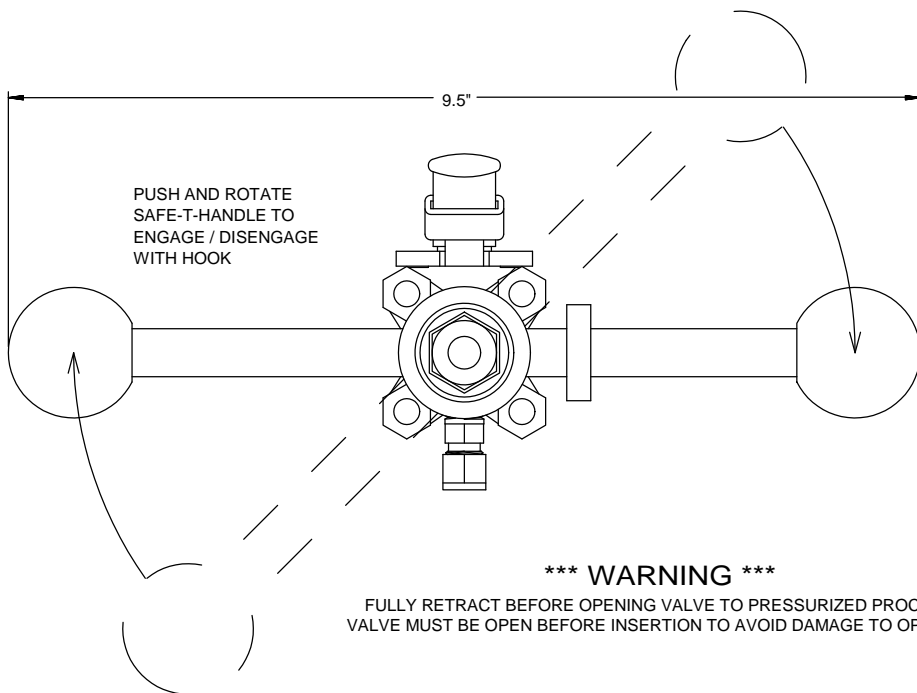
MAXIMUM INSERTION / RETRACTION PRESSURE 450 PSIG
 MAXIMUM OPERATING PRESSURE 750 PSIG
 MAXIMUM TEMPERATURE 50C

AVAILABLE OPTIONS

* OPTODES:

TYPE	OXYGEN RANGES	LOD
BOS1	0-1.8ppm O2 (l)	1ppb (l)
	0-4.2% O2 (g)	0.002% O2
BOS2	0-22ppm O2 (l)	15ppb (l)
	0-25% O2 (g)	0.03% O2
BOS3	0-300ppm O2 (g)	0.5ppm O2

- * SS316 BALL VALVE: GP W.O.G., 29" VACUUM/W.O.G./NACE
- * SEALS: EPDM, FFKM, VITON
- * FIBER LENGTH: 2.5M, 5.0M, 10.0M

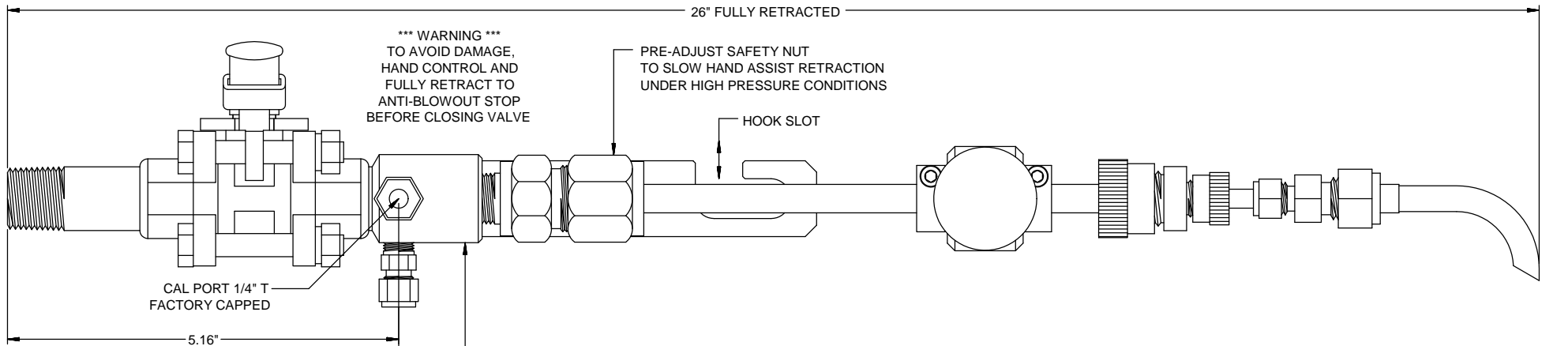


*** WARNING ***

FULLY RETRACT BEFORE OPENING VALVE TO PRESSURIZED PROCESS
 VALVE MUST BE OPEN BEFORE INSERTION TO AVOID DAMAGE TO OPTODE

REV	DATE	INITIAL	DESCRIPTION	TD	HMM
A	09/30/15				
REVISIONS					
MATERIAL DESCRIPTION					
PART NO.					
DIMENSIONS IN INCHES					
TOLERANCES					
FRACTIONAL					
UNLESS OTHERWISE SPECIFIED					
DATE	SCALE	SIZE	SHEET	SHEET	
08/15/2015	1:1	A	2P0316	1 OF 3	





*** WARNING ***
TO AVOID DAMAGE,
HAND CONTROL AND
FULLY RETRACT TO
ANTI-BLOWOUT STOP
BEFORE CLOSING VALVE

PRE-ADJUST SAFETY NUT
TO SLOW HAND ASSIST RETRACTION
UNDER HIGH PRESSURE CONDITIONS

HOOK SLOT

CAL PORT 1/4" T
FACTORY CAPPED

5.16"

VENT / DRAIN PORT
1/4" T
FACTORY CAPPED

UNSCREW GLAND FROM
CHAMBER

GLAND
SS 303

LOOSEN ALLEN
SCREWS TO REMOVE
SAFE-T-HANDLE
AND GLAND

MAKE REFERENCE
MARK FOR
REASSEMBLY

WAND

SAFE-T-HANDLE

LOOSEN THUMB NUT
TO REMOVE WAND

APPLY
TEFLON TAPE
BEFORE
ASSEMBLY

CAP INSTALLATION

CAP
ASSEMBLY

ORING
2-016

GLAND ASSEMBLY

TAPER

ORING
2-110

SEAL
VITON

REPLACEMENT CAP ASSEMBLIES

OPTCODE	MATERIAL	P/N
BOS1	SS316/EPDM	B3907-1100
	SS316/FFKM	B3907-1102
	SS316/VITON A	B3907-1101
BOS2	SS316/EPDM	B3907-1103
	SS316/FFKM	B3907-1105
	SS316/VITON A	B3907-1104
BOS3	SS316/EPDM	B3907-1106
	SS316/FFKM	B3907-1108
	SS316/VITON A	B3907-1107

REPLACEMENT SEAL KIT

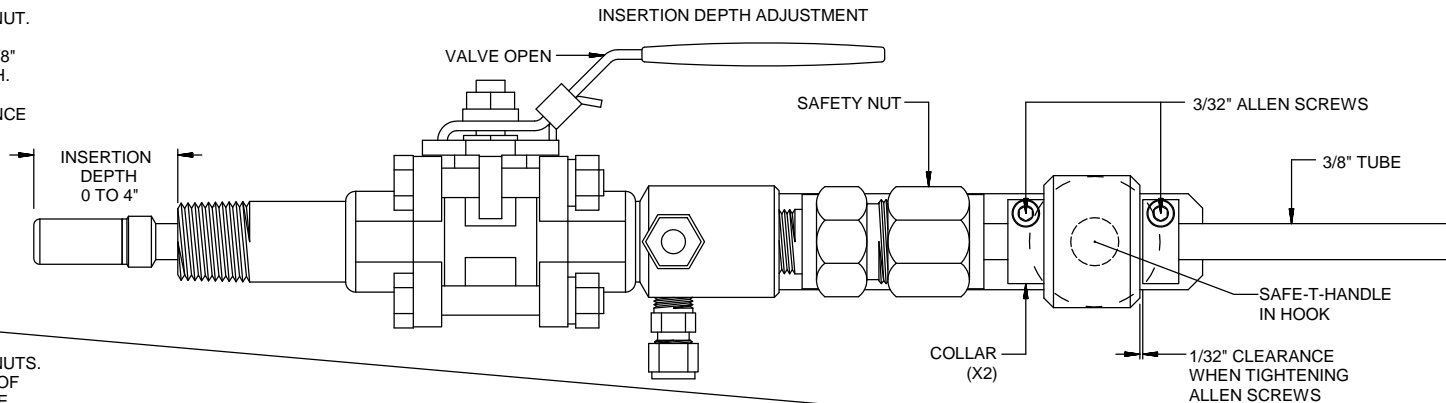
MATERIAL	P/N
EPDM	B4904K-1015
FFKM	B4904K-1016
VITON ETP	B4904K-1017

A	09/30/15	Initial	TD	HMM
REV	DATE	DESCRIPTION	DMN	APVD
REVISIONS				
MATERIAL/DESCRIPTION			PART NO.	
DIMENSIONS IN INCHES				
TOLERANCES				
FRACTIONAL				
ANGLES ± 1/4°				
UNLESS OTHERWISE SPECIFIED				
DRAWN BY		HMM	ECO	DRWING NO.
REV'D BY		HMM	2675	2P0316
DATE		08/15/2015	SCALE	1:1
SHEET		2 OF 3	SHEET	

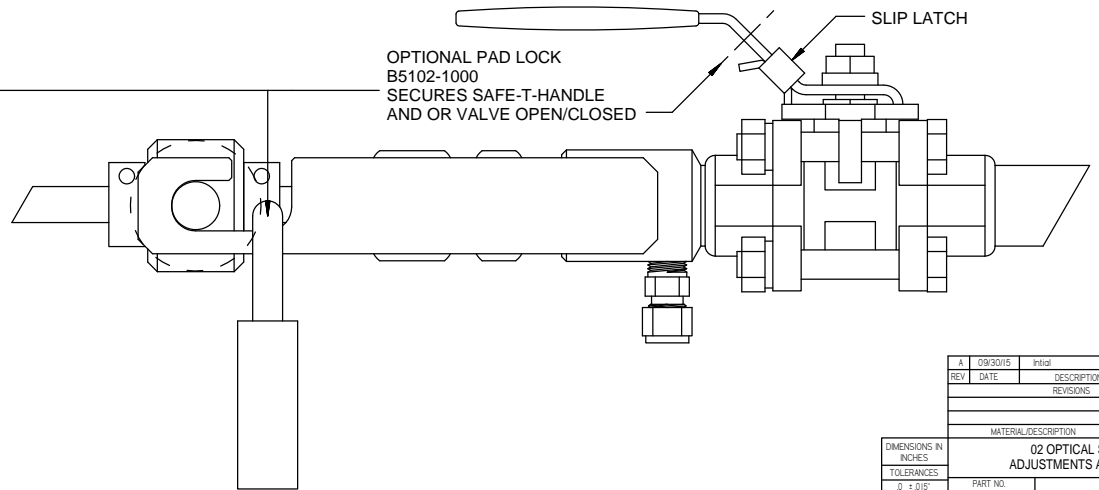
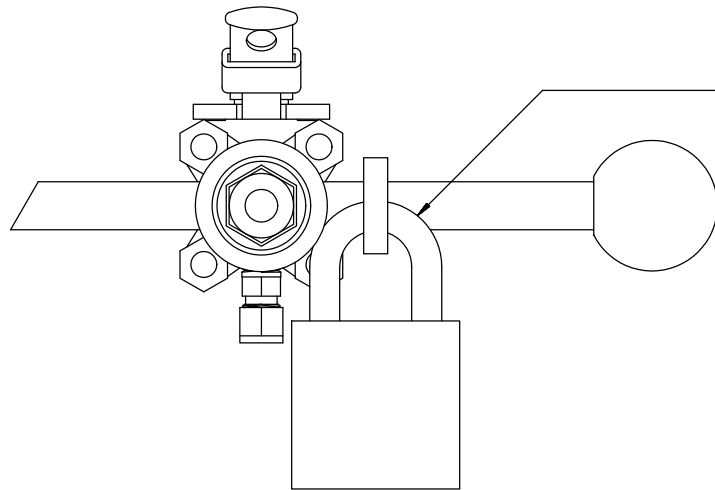
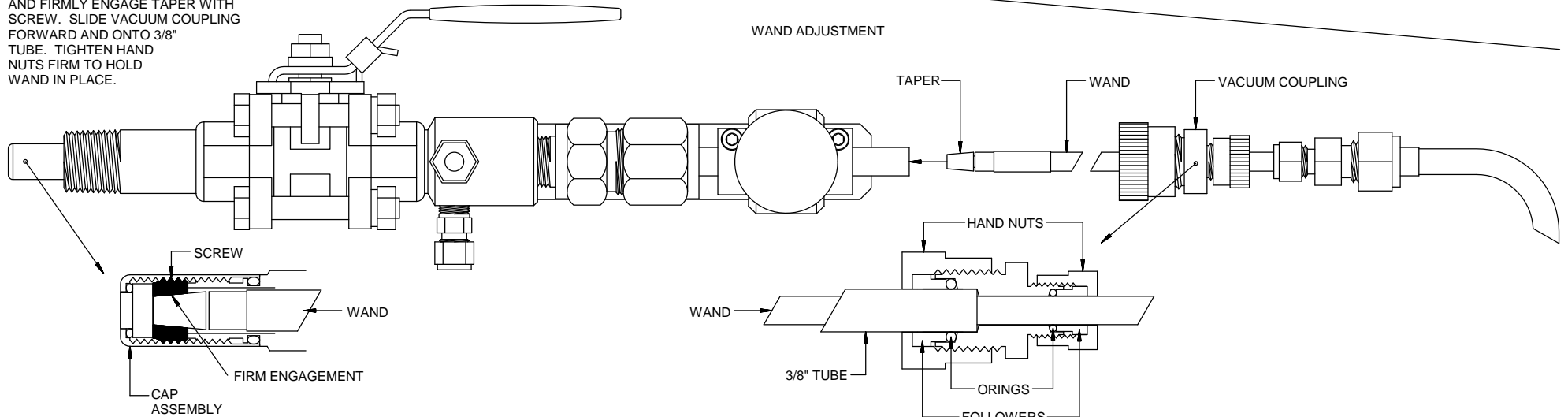
02 OPTICAL SAFE TAP
RETRACTED

BARBEN ANALYTICAL AMETEK
5200 Conover Drive Carson City, NV 89706 PH: (775) 883-2500 FAX: (775) 297-4740

OPEN VALVE AND LOOSEN SAFETY NUT.
 POSITION SAFE-T-HANDLE IN HOOK.
 LOOSEN ALLEN SCREWS. ADJUST 3/8"
 TUBE TO DESIRED INSERTION DEPTH.
 POSITION COLLARS AND TIGHTEN
 ALLEN SCREWS WITH 1/32" CLEARANCE
 TO SAFE-T-HANDLE.



LOOSEN VACUUM COUPLING HAND NUTS.
 SLIDE VACUUM COUPLING TO BACK OF
 WAND. INSERT WAND INTO 3/8"
 TUBE AND FIRMLY ENGAGE TAPER WITH
 SCREW. SLIDE VACUUM COUPLING
 FORWARD AND ONTO 3/8"
 TUBE. TIGHTEN HAND
 NUTS FIRM TO HOLD
 WAND IN PLACE.



REV	DATE	INITIAL	DESCRIPTION	TD	HW
A	09/30/15	Initial			
REVISIONS					
MATERIAL DESCRIPTION					PART NO.
DIMENSIONS IN INCHES					
TOLERANCES					
D ± 0.015"					
0.01 ± 0.001"					
0.000 ± 0.000"					
FRACTIONAL ALL ± 0.015"					
ANGLES ± 1/4°					
UNLESS OTHERWISE SPECIFIED					
DRAWN BY	DATE	SCALE	SIZE	DRAWING NO.	SHEET
HMM	08/12/2015	1:1	A	2P0316	3 OF 3

02 OPTICAL SAFE TAP
 ADJUSTMENTS AND LOCKING

PART NO. FOR

BARBEN ANALYTICAL AMETEK

6200 Conover Drive Carson City, NV 89706 PH: 775 885 2600 FAX: 775 229 4740

SCALE 1:1