

MAXIMUM INSERTION / RETRACTION PRESSURE 450 PSIG  
 MAXIMUM OPERATING PRESSURE 750 PSIG  
 MAXIMUM TEMPERATURE 50C

AVAILABLE OPTIONS

\* OPTODES:

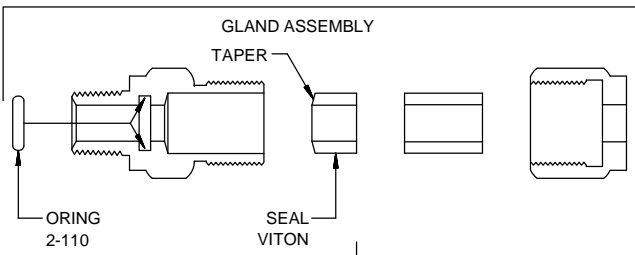
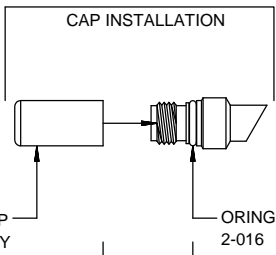
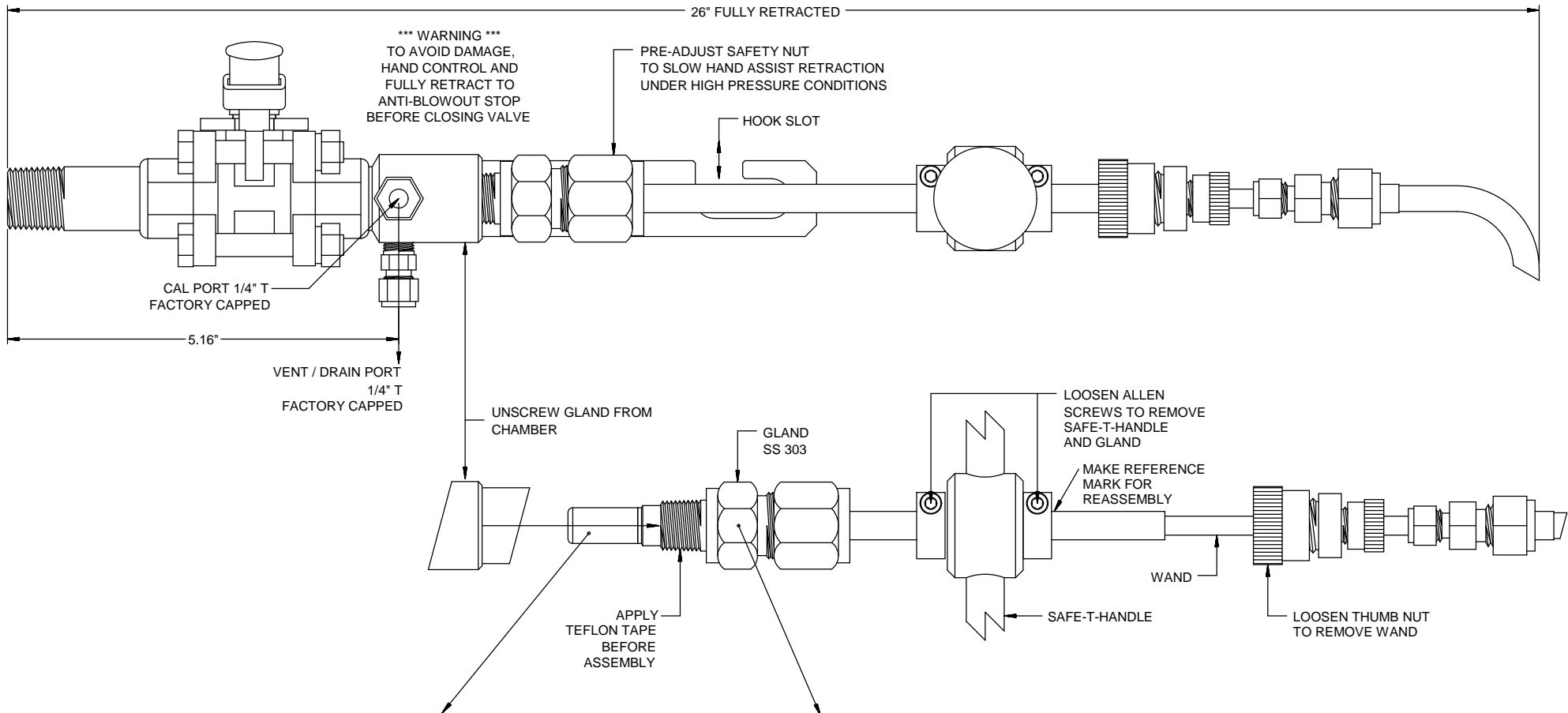
TYPE	OXYGEN RANGES	LOD
BOS1	0-1.8ppm O2 (l) 0-4.2% O2 (g)	1ppb (l) 0.002% O2
BOS2	0-22ppm O2 (l) 0-25% O2 (g)	15ppb (l) 0.03% O2
BOS3	0-300ppm O2 (g)	0.5ppm O2

- \* SS316 BALL VALVE: GP W.O.G., 29" VACUUM/W.O.G./NACE
- \* SEALS: EPDM, FFKM, VITON
- \* FIBER LENGTH: 2.5M, 5.0M, 10.0M

\*\*\* WARNING \*\*\*

FULLY RETRACT BEFORE OPENING VALVE TO PRESSURIZED PROCESS  
 VALVE MUST BE OPEN BEFORE INSERTION TO AVOID DAMAGE TO OPTODE

REV	DATE	INITIAL	DESCRIPTION	TD	HMM
A	09/30/15				
REVISIONS					
MATERIAL DESCRIPTION					
PART NO.					
DIMENSIONS IN INCHES					
TOLERANCES					
PART NO.					
FOR					
FRACTIONAL					
ANALYTICAL					
BARBEN AMETEK					
5200 Conover Drive Carson City, NV 89706 PH: 775/883-2500 FAX: 775/237-4740					
DRAWN BY					
UNLESS OTHERWISE SPECIFIED					
DATE	SCALE	SIZE	SHEET	SHEET	
08/15/2015	1:1	A	2P0316	1 OF 3	



REPLACEMENT CAP ASSEMBLIES

OPTCODE	MATERIAL	P/N
BOS1	SS316/EPDM	B3907-1100
	SS316/FFKM	B3907-1102
	SS316/VITON A	B3907-1101
BOS2	SS316/EPDM	B3907-1103
	SS316/FFKM	B3907-1105
	SS316/VITON A	B3907-1104
BOS3	SS316/EPDM	B3907-1106
	SS316/FFKM	B3907-1108
	SS316/VITON A	B3907-1107

REPLACEMENT SEAL KIT

MATERIAL	P/N
EPDM	B4904K-1015
FFKM	B4904K-1016
VITON ETP	B4904K-1017

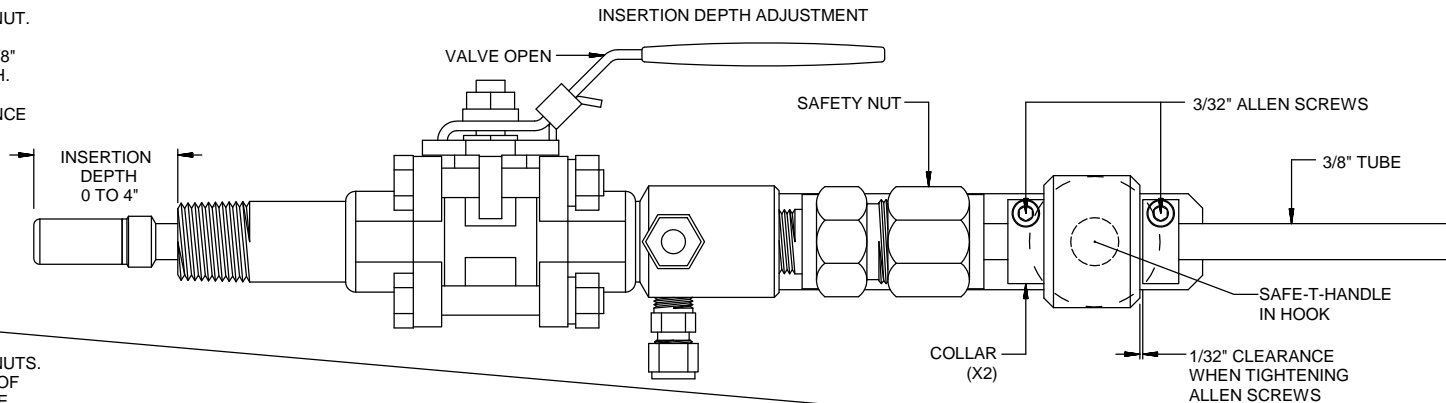
A	09/30/15	Initial	TD	HMM
REV	DATE	DESCRIPTION	DMN	APVD
REVISIONS				
MATERIAL/DESCRIPTION			PART NO.	
DIMENSIONS IN INCHES				
TOLERANCES				
FRACTIONAL				
ANGLES ± 1/4°				
UNLESS OTHERWISE SPECIFIED				
DRAWN BY		HMM	ECO	DRWING NO.
REV'D BY		HMM	2675	2P0316
DATE		08/15/2015	SCALE	1:1
SHEET		2 OF 3	SHEET	

02 OPTICAL SAFE TAP RETRACTED

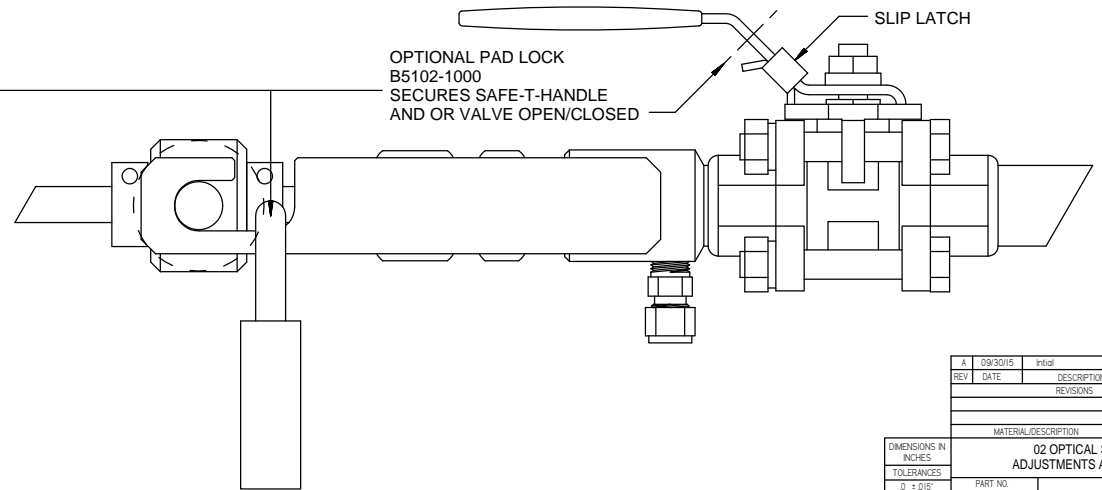
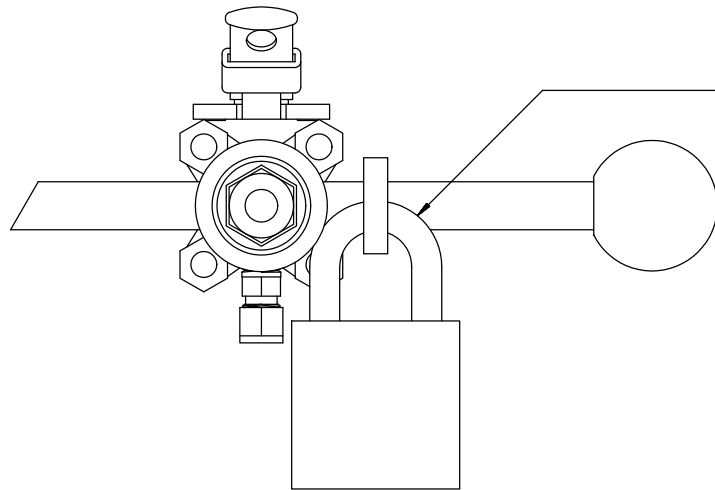
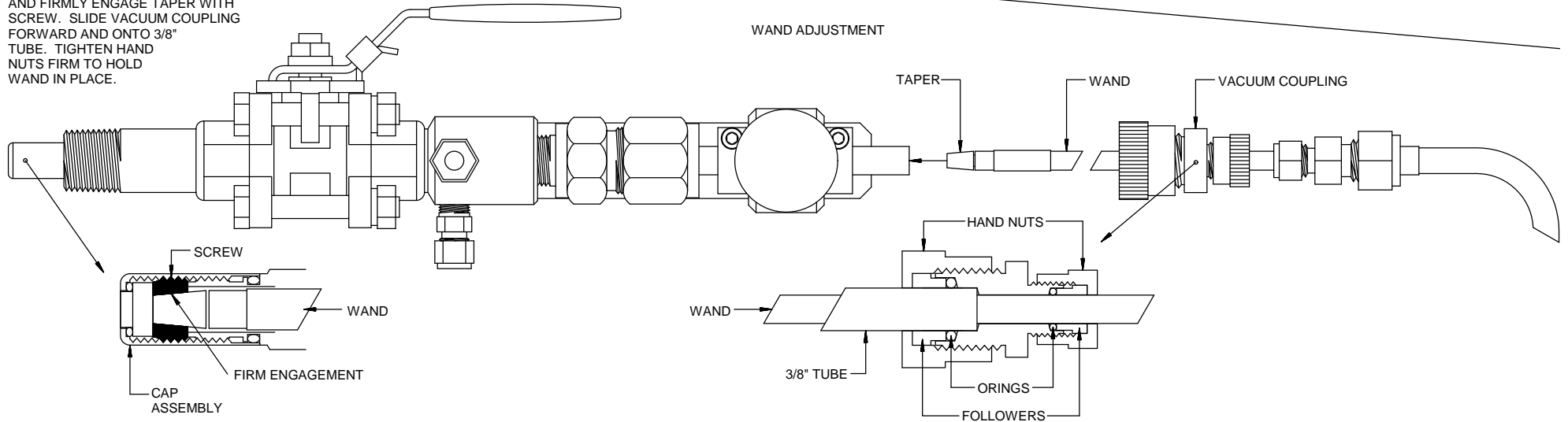
BARBEN ANALYTICAL AMETEK

5200 Conover Drive Carson City, NV 89706 PH: 775-883-2500 FAX: 775-237-4740

OPEN VALVE AND LOOSEN SAFETY NUT.  
 POSITION SAFE-T-HANDLE IN HOOK.  
 LOOSEN ALLEN SCREWS. ADJUST 3/8"  
 TUBE TO DESIRED INSERTION DEPTH.  
 POSITION COLLARS AND TIGHTEN  
 ALLEN SCREWS WITH 1/32" CLEARANCE  
 TO SAFE-T-HANDLE.



LOOSEN VACUUM COUPLING HAND NUTS.  
 SLIDE VACUUM COUPLING TO BACK OF  
 WAND. INSERT WAND INTO 3/8"  
 TUBE AND FIRMLY ENGAGE TAPER WITH  
 SCREW. SLIDE VACUUM COUPLING  
 FORWARD AND ONTO 3/8"  
 TUBE. TIGHTEN HAND  
 NUTS FIRM TO HOLD  
 WAND IN PLACE.



A	09/30/15	Initial		TD	HMW
REV	DATE	DESCRIPTION		DMN	APVD
REVISIONS					
MATERIAL DESCRIPTION					PART NO.
DIMENSIONS IN INCHES					02 OPTICAL SAFE TAP ADJUSTMENTS AND LOCKING
TOLERANCES					FOR
D ± .015"					
.00 ± .001"					
.000 ± .005"					
FRACTIONAL ALL ± .015"					
ANGLES ± 1/4°					
UNLESS OTHERWISE SPECIFIED					
DRAWN BY	HMW	ECO	DRAWING NO.	2P0316	
DPVD BY	HMW	2675	SCALE	2P0316	
DATE	08/12/2015	SCALE	1:1	SIZE	A
				SHEET	3 OF 3

